



## It is fitting that the College has celebrated its rich history of 125 years.

BUT EQUALLY THE CELEBRATIONS ARE ALSO ABOUT LOOKING TO THE FUTURE, STRIVING FORWARD AND TRANSFORMING COLLEGE FACILITIES TO ENHANCE ITS CAPABILITIES TO STUDENTS AND COMMUNITY ALIKE.

We have identified nine projects that will assist in our vision of being one of New Zealand's leading Catholic Boys secondary schools. A school which delivers young men to the community who will be a force for good and make a difference.

Our first priority is to redevelop two facilities right at the heart of the College: the Quad, and the Theatre at its northern end.

### THE QUAD

This hub for lunch, conversation and laughter is in line for a significant makeover. Social interaction is critical to a Marist education and academic success, and our young men deserve a fresh, functional space to enjoy their unique St Patrick's experience.

### THE THEATRE

It is one of the College's best kept secrets but is largely in its original state of 30 years ago. We have ambitious plans to transform this facility into a performing arts centre, complete with leading edge technology and top class hosting facilities. It will create new opportunities for a variety of academic and artistic events and provide a home to the College's highly successful choir – Con Anima, and public speaking teams.

We have appointed Athfield Architects who are bringing their vision and flair – balanced with practical design – to the Quad/Theatre project.

Underpinning this and future development, has been the St Patrick's College Foundation, launched in September 2009. The Foundation is spearheading the fundraising, and has already secured a \$1m commitment from the Society of Mary Education Trust. Its broader objective is to reconnect families, Old Boys and friends with the College.

### HOW ARE WE GOING TO DO THIS?

None of this can be done without your support. We do thank those donors who have made a contribution already – that's been fantastic, and the Foundation Board has committed \$250,000 to this project.

The Foundation has an underpinning relationship with the Society of Mary. The Society will be working in partnership with the Foundation and the College Board of Proprietors to progress this redevelopment.

The Theatre/Quad project will cost approximately \$2.5m, but construction can commence once \$1.5m has been committed.

We believe that – with your commitment – we can reach the \$1.5m checkpoint within 12 months. This will be a challenge but we have made a great start, and throughout the College's history our predecessors have shown that great things can be achieved with faith and the energy of the whole community.

## Let's share our vision with you ...

### THE QUAD: IT IS THE BOYS' SPACE

The transformation of the Quad needs to happen!

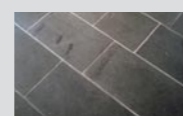
Often described as barren and dull but with superior dimensions, our challenge is to turn the Quad into a space that is vibrant, interesting and interactive.

The Quad is the beating heart of the boys' socialising whilst at college. That isn't about to change and we've recognised that our boys deserve better.

Additionally the Quad leads into the Theatre and one cannot be redeveloped without the other. Features will include:

- Impact paving, making a visual connection to Chanel, Kennedy and Redwood blocks;
- Seating spaces;
- Attractive landscaping;
- Recessed rubbish bins;
- Tile wall for Old Boys and families to engrave their name.

#### THE QUAD DESIGN ELEMENTS:



##### bluestone

Hard wearing and attractive stone paving will integrate the interior space of the foyer with the asphalt of the quad surrounding it.



##### large rod seating

Simple stack-able geometric forms allow periodic re-configuration and add colour and interest whilst giving variation in seating options.



##### brick paving lines

Integrate the new additions with existing brick elements surrounding the quad whilst providing a degree of structure and spatial definition.



##### brick planters

Refurbished and new planters contain a selection of native greenery such as ngaio, pohutukawa and lancewood with grass below.

Wide edges at an appropriate height provide comfortable seating and a larger custom size brick removes the domestic quality of common brick.

##### wind breaks

Give a sense of protection to help create more intimate spaces within the greater quad. Porous screens create optimum turbulence free wind breaks and maintain visibility through the screens.

Sections of timber slats give variation to the wind breaks and provide a framework for population by vines. The wind breaks will also provide docking locations for rubbish bins

### THE THEATRE: CREATING OUR OWN PERFORMING ARTS CENTRE

Previously known as the Todd Theatre this facility is ripe for redevelopment. We don't have to start from scratch to create a Performing Arts Centre; the structure is solid so most funds can be directed towards enhancement and technology.

- A glass extension wraps around the existing theatre, creating a foyer for 200 guests. Additional kitchen facilities and internal access into both sides of the theatre;
- 200 comfortable theatre seats are to be fitted to the existing tiered platforms;
- A stage area will be created by demolishing the internal wall to the services area at the rear of the theatre;
- The glazed foyer will be a multi-purpose space. It can be used as a wet weather lunch area for students during the day;
- Lighting, sound, heating and all technological services will be purpose-built for a College developing young men in the 21st century;
- By providing both a foyer and theatre, this Performing Arts Centre becomes an attractive facility to generate rental income.

## Donation & Purchase Options

THERE ARE A NUMBER OF WAYS YOU CAN HELP TO MAKE THE QUAD/THEATRE REDEVELOPMENT A REALITY. PLEASE TAKE A MOMENT TO READ THROUGH THE FOLLOWING OPTIONS.

### DONATIONS

Each gift is vitally important – a core group of donors contributing just \$10 per week would give considerable momentum to our fundraising efforts.

See the back panel of this brochure for options to make a regular or one-off donation.

### NAMED DISPLAY PRODUCTS

Suggested donations include GST and payment can be spread over a period of up to two years.

- **Exterior tiles in the Quad – \$200 per tile (200 available)**
- **Theatre seats – \$750 per seat (200 available)**

The redeveloped Quad will feature a tile wall. Each tile can have an Old Boy's or Family name engraved on it.

- **Bench seats in the Quad – \$1000 per seat (15 available)**

Smart but functional these bench seats will enable those student conversations to continue. Your family can become a part of these daily conversations! Each bench seat purchased will feature a name plate that can be engraved.

- **Trees to beautify the Quad – \$1000 per tree (8 available)**

Redevelopment will provide a greener look to the Quad, with trees protected in each brick planter. A name plate will be attached to the brick planter.

- **Inscription examples of a name plate for the above options**

- Donated by the Smith family
- In Memory of Joe Smith 1950-53
- Joe Smith 1950-53

### THEATRE NAMING RIGHTS

Naming rights to the Theatre represent an opportunity for one significant donor to have a lasting association with our Theatre redevelopment.

The College would like a long term relationship with a family or business, which would include name positioning on the Theatre itself and references in all College publications (if desired).

Please contact the Development Manager (development@stpats.school.nz) for a discreet conversation about this unique opportunity.

### THE PATRICIAN CLUB

**\$1,250 including GST per annum**

The Patrician Club has been formed for businesses or families to support the College and enjoy the social benefits offered by the Club.

#### Benefits of club membership include:

- Name recorded on a membership board in the College Hall
- Logo/link displayed on the Foundation website and periodically in The Cornerstone quarterly newsletter
- Several social/networking events during the year
- For those who join in 2010, 12 bottles of Selini wine and a copy of 'Sectare Fidem', the Commemorative book
- Access to an ongoing calendar of events (including tickets to the World of Wearable Arts show for 2011 members)
- Patrician Club banner to be displayed at key College events

#### WHAT TO DO?

Please complete the panel on the reverse side to indicate your preferred gifting option.